

**Brixton Road, Brixton, SW9**

2 bedroom flat to let

**£520 Per Week**

Furnished

## Property Details

Presenting this stunning, sizable two bedroom flat with access to a communal terrace. The property offers a separate reception and eat-in kitchen diner, a luxury bathroom and two substantial double bedrooms. The secure gated entrance that leads to a spacious roof garden allows you to relax whilst being a short walk from vibrant Brixton. The tube is only two minutes away, the famous Ritzy Cinema, POP Brixton, Windrush Square and Brixton Village are a minutes' walk and the green open spaces of Brockwell Park are also within walking distance.

## Features

- Characterful features
- Central location
- Close to transport links
- Roof garden
- Separate kitchen & dining

Council tax band B      EPC rating D (55)





Brixton Road, Brixton, SW9



## 2 Bed Flat

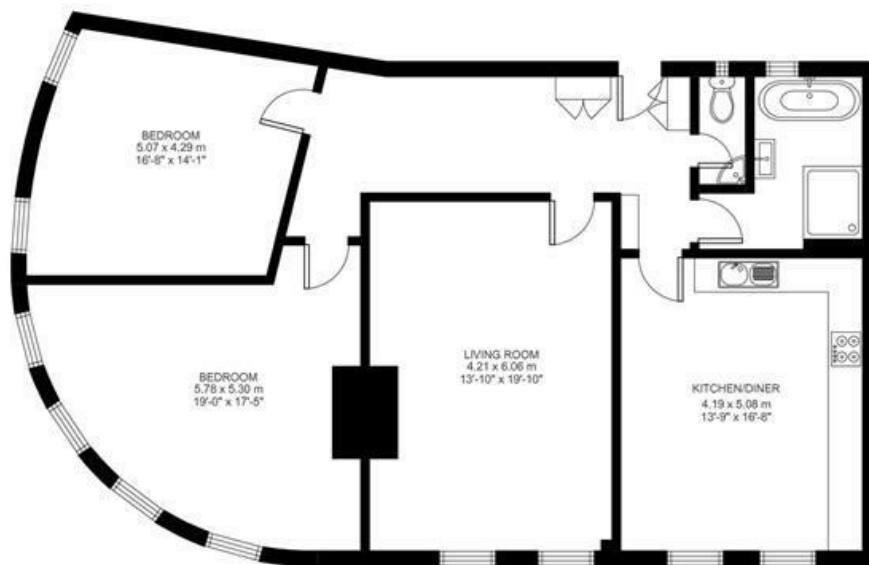
Approx internal area:

**1253 sqft 116 sqm**

While we do try our very best, floor plans are produced as a guide only and we take no responsibility for the precise accuracy with which any property is represented

# Brixton Road

Second Floor





Brixton Road, Brixton, SW9

